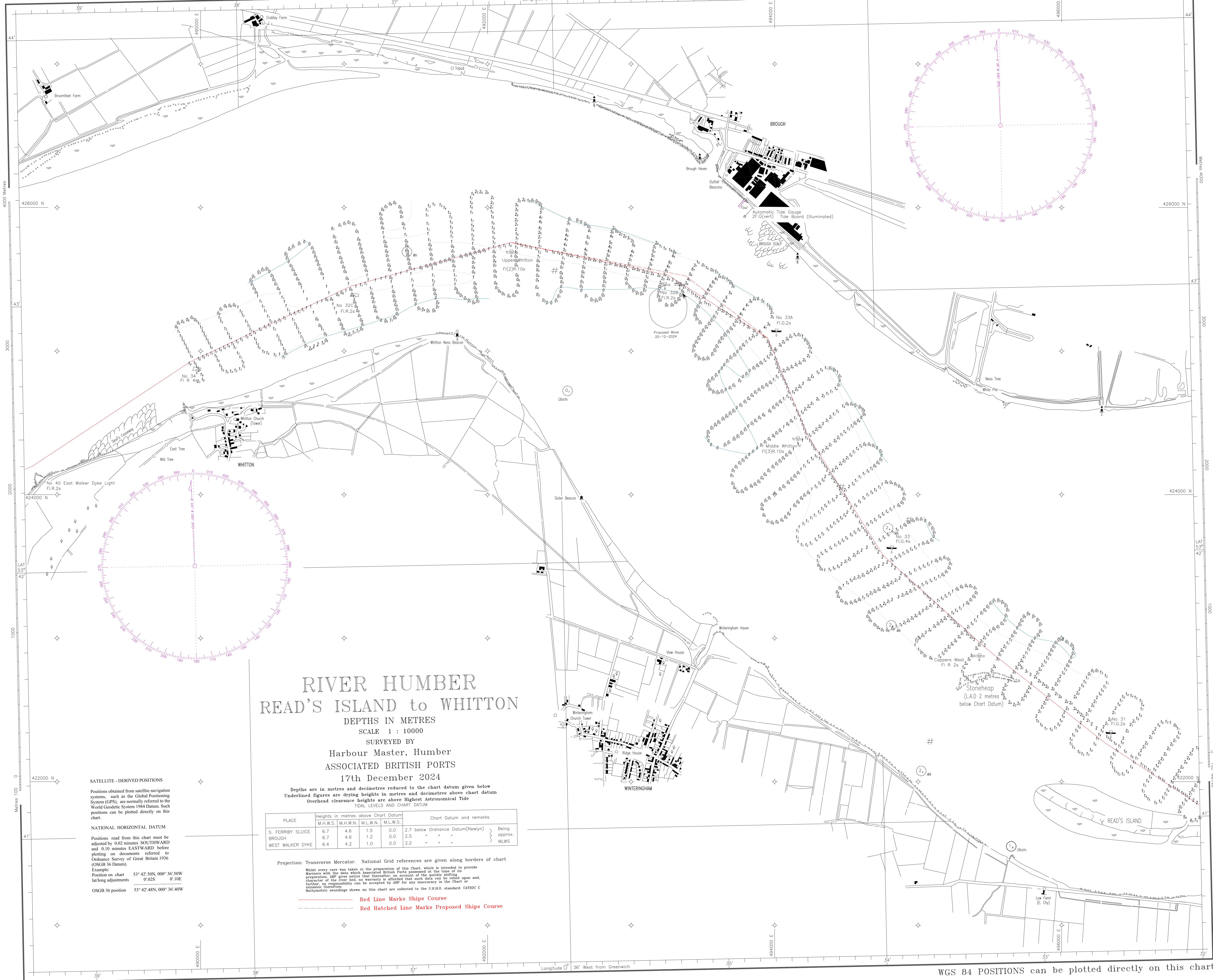


WGS 84 POSITIONS can be plotted directly on this chart



RIVER HUMBER READ'S ISLAND TO WHITTON

DEPTHS IN METRES
SCALE 1 : 10000

SURVEYED BY
Harbour Master, Humber
ASSOCIATED BRITISH PORTS
17th December 2024

Depths are in metres and decimetres reduced to the chart datum given below
Underlined figures are drying heights in metres and decimetres above chart datum
Overhead clearance heights are above Highest Astronomical Tide
TIDAL LEVELS AND CHART DATUM

| PLACE | Heights in metres above Chart Datum | | | | Chart Datum and remarks |
|-------------------|-------------------------------------|----------|----------|----------|---|
| | M.H.W.S. | M.L.W.N. | M.L.W.N. | M.L.W.S. | |
| S. FERRIBY SLUICE | 6.7 | 4.6 | 1.5 | 0.0 | 2.7 below Ordnance Datum (Newlyn) } Being approx. |
| BROUGH | 6.7 | 4.6 | 1.2 | 0.0 | 2.5 " " " " } MLWS |
| WEST WALKER DYKE | 6.4 | 4.2 | 1.0 | 0.0 | 2.2 " " " " } |

Projection: Transverse Mercator. National Grid references are given along borders of chart
Whilst every care was taken in the preparation of this Chart, which is intended to provide Mariners with the data which associated British Ports possessed at the time of its preparation, ABP gives notice that, therefore, no account of the quality of the data or the character of the river bed, so far as it is not shown, is afforded that such data can be relied upon and, further, no responsibility can be accepted by ABP for any inaccuracy in the Chart or omission therefrom.
Bathymetric soundings shown on this chart are collected to the U.K.H.O. standard: CATZOC C

Red Line Marks Ships Course
Red Hatched Line Marks Proposed Ships Course

SATELLITE - DERIVED POSITIONS
Positions obtained from satellite navigation systems, such as the Global Positioning System (GPS), are normally referred to the World Geodetic System 1984 Datum. Such positions can be plotted directly on this chart.

NATIONAL HORIZONTAL DATUM
Positions read from this chart must be adjusted by 0.02 minutes SOUTHWARD and 0.10 minutes EASTWARD before plotting on documents referred to Ordnance Survey of Great Britain 1936 (OSGB 36 Datum).

Example:
Position on chart 53° 42' 50N, 000° 36' 50W
lat/long adjustments 0°02S 0°10E
OSGB 36 position 53° 42' 48N, 000° 36' 40W